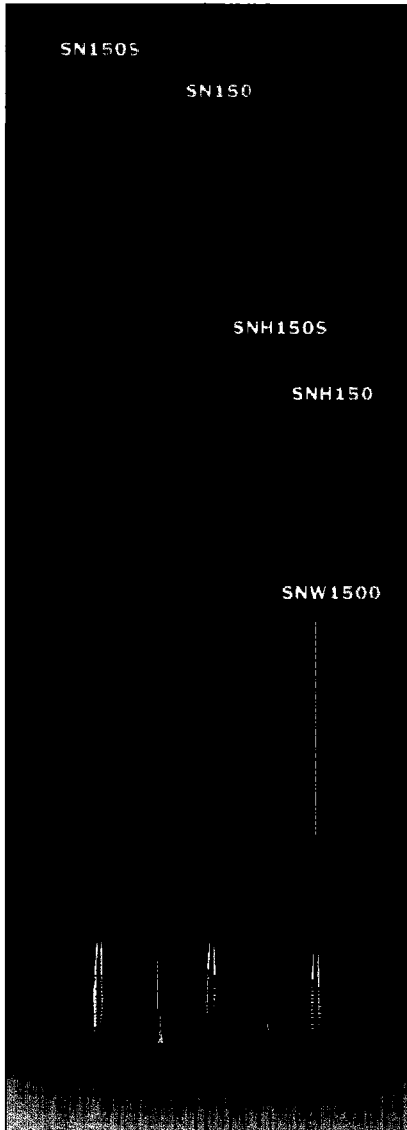


## Cushcraft mobiles . . . on the air to stay. Available in 150-174 MHz and 220-222 MHz



### High Performance Gain Mobile

Top quality components such as all-brass hardware, 14.5 feet (4.4m) of 97% braid-covered RG58A/U, silver-plated connectors, and silver-plated coils assure you of great performance. All-brass mounts and ultrasonically welded-in brass threads mean longer life. Our form-mounted, silver-plated coil eliminates vibration-induced damage and assures consistent tuning. Improve your inventory control by specifying FastPaks when ordering.

### Half-Wave Mobiles

These 150-174 MHz half-wave antennas require no ground, therefore do not have to be mounted on metal. This makes them great for installation on motorcycles, fiberglass bodies, or alarm boxes.



### Heavy-Duty Broadband Mobiles (150-174) MHz

With 24 MHz of bandwidth, these quality quarterwaves are great for multichannel public safety applications.

### Super Silverbutton Quarterwaves

100% contact between mount and base and proper impedance match are what separate our quarterwaves from the rest.

### HIGH PERFORMANCE GAIN MOBILES

- 3 dBd gain
- Spring models available
- Stainless steel radiator
- All-brass mounts
- 14.5 feet (4.4m) RG58A/U cable
- Form-mounted silver-plated coil
- Ultrasonically bonded coil

### SUPER SILVERBUTTON QUARTERWAVES

- 100% mount-to-antenna contact
- Silver-plated connectors
- 14.5 feet (4.4m) RG58A/U cable
- 97% braid-covered feedline
- No cutting or tuning necessary
- All-brass mounting hardware

### VHF MOBILE SPECIFICATIONS

| Model            | VHF Quarterwave | VHF Half-wave | VHF High Perform. |
|------------------|-----------------|---------------|-------------------|
|                  | 0 dB Gain       | 2 dB          | 3 dB              |
| Freq. Range. MHz | 136-174         | 150-174       | 144-174           |
| VSWR             | <1.5:1          | <1.5:1        | <1.5:1            |
| Radiator         | 302 SS          | 17-7PH SS     | 17-7PH SS         |
| Spring           | N/A             | SS            | SS                |
| Hardware         | Brass           | Brass         | Brass             |

### VHF MOBILE SELECTOR CHART

| FREQUENCY MHz                           | HOLE MOUNTS    |           |             |           | BLACK MAG MTS |           | TRUNK MOUNTS |           | COIL & ROD ONLY |           | ROD ONLY | COIL ONLY  |           |
|---|----------------|-----------|-------------|-----------|---------------|-----------|--------------|-----------|-----------------|-----------|----------|------------|-----------|
|   | Without Spring |           | With Spring |           | w/o Spring    | w/ Spring | w/o Spring   | w/ Spring | w/o Spring      | w/ Spring |          | w/o Spring | w/ Spring |
|   | RG-58          | UltraLink | RG-58       | UltraLink | RG-58         | RG-58     | RG-58        | RG-58     |                 |           |          |            |           |
| <b>VHF Gain Mobiles</b>                 |                |           |             |           |               |           |              |           |                 |           |          |            |           |
| 150-174 MHz, 3 dB Gain                  | SN150          | SN150L    | SN150S      | SN150LS   | SN150M        | SN150MS   | SN150T       | SN150TS   | SN150A          | SN150SA   | SN30R    | SN150C     | SN150SC   |
| 220-222 MHz, 3 dB Gain                  | SN220          | SN220L    | SN220S      | SN220LS   | SN220M        | SN220MS   | SN220T       | SN220TS   | SN220A          | SN220SA   | SN30R    | SN220C     | SN220SC   |
| <b>VHF Quarterwave Mobiles</b>          |                |           |             |           |               |           |              |           |                 |           |          |            |           |
| 136-144 MHz, 0 dB Gain                  | SN1361         | SN1361L   | NA          | NA        | SN1361M       | NA        | SN1361T      | NA        | SN1361A         | NA        | SN1361R  | NA         | NA        |
| 144-152 MHz, 0 dB Gain                  | SN1441         | SN1441L   | NA          | NA        | SN1441M       | NA        | SN1441T      | NA        | SN1441A         | NA        | SN1441R  | NA         | NA        |
| 150-160 MHz, 0 dB Gain                  | SN1501         | SN1501L   | NA          | NA        | SN1501M       | NA        | SN1501T      | NA        | SN1501A         | NA        | SN1501R  | NA         | NA        |
| 152-162 MHz, 0 dB Gain                  | SN1521         | SN1521L   | NA          | NA        | SN1521M       | NA        | SN1521T      | NA        | SN1521A         | NA        | SN1521R  | NA         | NA        |
| 162-174 MHz, 0 dB Gain                  | SN1621         | SN1621L   | NA          | NA        | SN1621M       | NA        | SN1621T      | NA        | SN1621A         | NA        | SN1621R  | NA         | NA        |
| 220-222 MHz, 0 dB Gain                  | SN2201         | SN2201L   | NA          | NA        | SN2201M       | NA        | SN2201T      | NA        | SN2201A         | NA        | SN2201R  | NA         | NA        |
| 150-174 MHz Wideband, 0 dB Gain, Spring | NA             | NA        | SNW1500S    | SNW1500LS | NA            | SNW1500MS | NA           | SNW1500TS | NA              | SNW1500SA | SNW1500R | NA         | SNW1500SC |
| <b>VHF Halfwave Mobiles</b>             |                |           |             |           |               |           |              |           |                 |           |          |            |           |
| 120-174 MHz, ground indep.              | SNH150         | SNH150L   | SNH150S     | SNH150LS  | SNH150M       | SNH150MS  | SNH150T      | SNH150TS  | SNH150A         | SNH150SA  | SNH150R  | SNH150C    | SNH150SC  |